



Your Community  
Healthcare Partners



# Sustainability & Carbon Reduction Report

2025





# Contents



- **About us** ..... 3
- **Our commitment to Sustainability and Carbon Reduction** ..... 4
- **Our progress so far** ..... 5
  - Facilities & Fleet ..... 5
  - Activities & Community engagement ..... 5
  - Organisational engagement ..... 5
  - Reporting ..... 5
- **Environmental reporting (ESOS & SECR)** ..... 6
  - ESOS ..... 6
  - SECR ..... 6
  - Decarbonisation Action Plan – Blackpool Net Zero Academy Project ..... 7
- **Our Carbon Reduction areas of focus** ..... 10
  - Business travel – inclusive of grey fleet ..... 10
  - Facilities – Head office ..... 10
  - Printing & Paper ..... 10





# About us

FCMS is a Social Enterprise health and wellbeing services provider, and we are passionate about our drive to deliver exceptional care to our patients, who are the central focus of all that we do. Our aim is to nurture an environment of inspiration, innovation, and disruption so that the people within our world receive exceptional care for this generation and the next.

FCMS started as a GP cooperative in 1994 providing home visiting services across Blackpool, Fylde and Wyre.

Fast forward to today and where we have over 850 employees and deliver services across the Fylde Coast, Lancashire & South Cumbria, South Yorkshire, Greater Manchester, and the Midlands. We've grown to provide everything from urgent care, diagnostic services, emergency dental services, call handling, and targeted care for vulnerable communities, and much, much more and last year we had over 1 million patient contacts across our services.

We only provide services we have a passion for and that we know we can deliver to an exceptional standard.





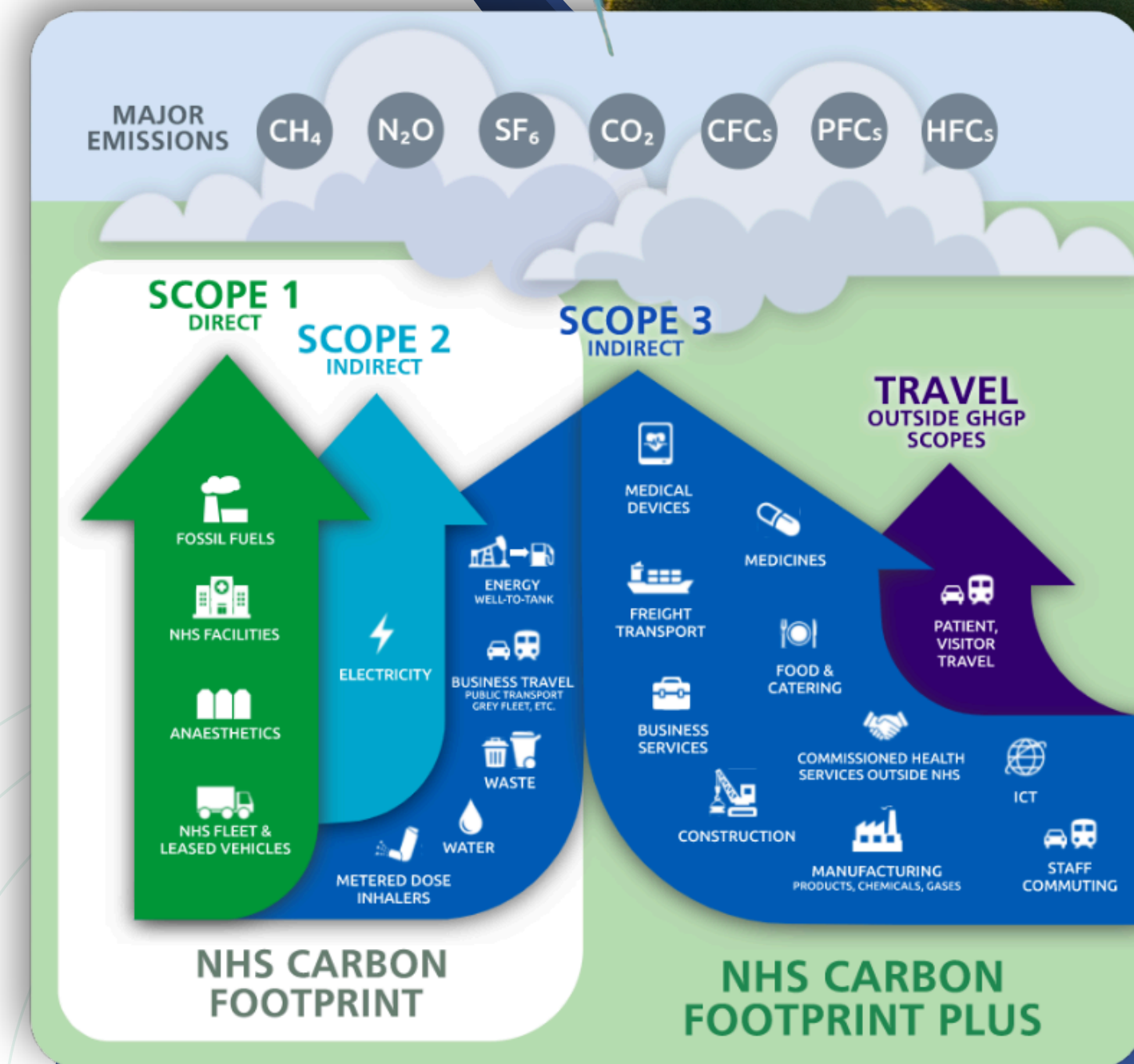
# Our Commitment to Sustainability and Carbon Reduction

FCMS (NW) Ltd recognises and readily accepts that carbon reduction and sustainability is the responsibility of everyone, and that future generations rely on the commitment of the current population in caring for the environment. We acknowledge that ineffective environmental protection will have a negative impact and be detrimental to the welfare and wellbeing of our society, which closely links with our corporate goal of providing for 'this generation and the next' and therefore we are motivated and committed to carbon reduction.

We also mirror the NHS Net Zero targets of aiming to reach net zero by 2040 for the emissions we control directly, with an ambition to reach 80% reduction by 2028 – 2032, along with aiming to reach net zero for the emissions we influence by 2045, with an ambition to reach 80% reduction by 2036 – 2039.

With various different reports, action plans and activities evidencing our efforts, the goal of this Sustainability & Carbon Reduction report is to:

- Streamline our carbon reduction aims both within the organisation and communities
- Showcase the progress we have already made
- Provide data, evidencing our compliance reporting
- Give insight to our action plan and hopes for the future
- Provide a progress update to our company wide Green Plan





# Our Progress so far



## Organisational Engagement

As part of our ongoing efforts to promote sustainability and carbon reduction organisationally, we have launched a group of Green Champions.

The opportunity to be a Green Champion is open to all staff members, irrespective of role. We are keen to have champions across all geographies FCMS covers, to ensure that sustainability is championed far and wide.

Chaired by our Health, Safety & Environmental Lead, our Green Champion meetings occur bi-monthly, where we discuss current topics, any ideas for improvement amongst our different geographies and also upcoming events that we could participate in or promote.



Staff who are not part of the Green Champion group also receive bi-monthly Green Newsletters, and also have access to our Green Intranet Page where they can view the organisational Green Plan, latest Newsletters, events and much more.



## Activities & Community Engagement

FCMS are keen to not only promote sustainability and carbon reduction within our services, but also support local community efforts.

### Fylde Sand Dunes Tree Planting Event:

In February 2025, some of our Green Champions volunteered to take part in the annual Fylde Sand Dunes Tree Planting Event, arranged by The Wildlife Trust.

This event involves Christmas trees, donated by the public, being strategically placed in front of existing sand dunes. As the wind blows, the branches of the trees trap sand which then gradually create new dunes.

**There were over 2000 trees planted along over 1km of coastline!**



## Facilities & Fleet

- Florescent tube lighting fully replaced with LED lighting at our Head Office sites.
- Bike shed at Head Office and Cycle to work Schemes in place.
- 2 x fully electric vehicles within our fleet.
- 7 x Plug in Hybrid vehicles.
- EV Charging ports at Head Office.
- Solar Panels fitted onto one of our Mobile Clinics.
- Incentive for staff to car share when using their own vehicles for business use – additional mileage paid per passenger.



## Reporting

- Compliance with both SECR and ESOS requirements.
- Fully engaged with reporting processes.
- Engaged with Consultancies to ensure that compliance is more than just a tick box, but instead a worthwhile activity that supports us to reduce our carbon emissions.



# Environmental Reporting

(ESOS & SECR)

As a large organisation, FCMS meets the requirements to comply with the Energy Savings Opportunity Scheme (ESOS) and Streamlined Energy Carbon Reporting (SECR). Both ESOS and SECR have been invaluable in our dedication to carbon reduction as they have allowed us to review our current energy usage at our Head Office, monitor progress, highlight areas of improvements, and create actions to further progress our commitments. To ensure our findings were enriched, we opted to seek support from Energy Consultants for both ESOS and SECR.

## ✓ ESOS

- Site survey completed at Head Office in Blackpool.
- Travel survey completed for full fleet, inclusive of grey fleet.
- Recommendations made by Energy Consultant based on survey findings.
- Feasible recommendations extracted from report into ESOS Action Plan (Phase 3) and submitted to portal.

## ✓ SECR

- Baseline report completed in 2024.
- Consultancy obtained to support with Year 1 Reporting (2025) submission.
- Site survey completed with Energy Consultant at Head Office in Blackpool.
- All energy data provided to consultant (inclusive of meter readings, invoices, mileage claims, fuel card data).
- Report generated with emission results, comparing FY2024 and FY2025.

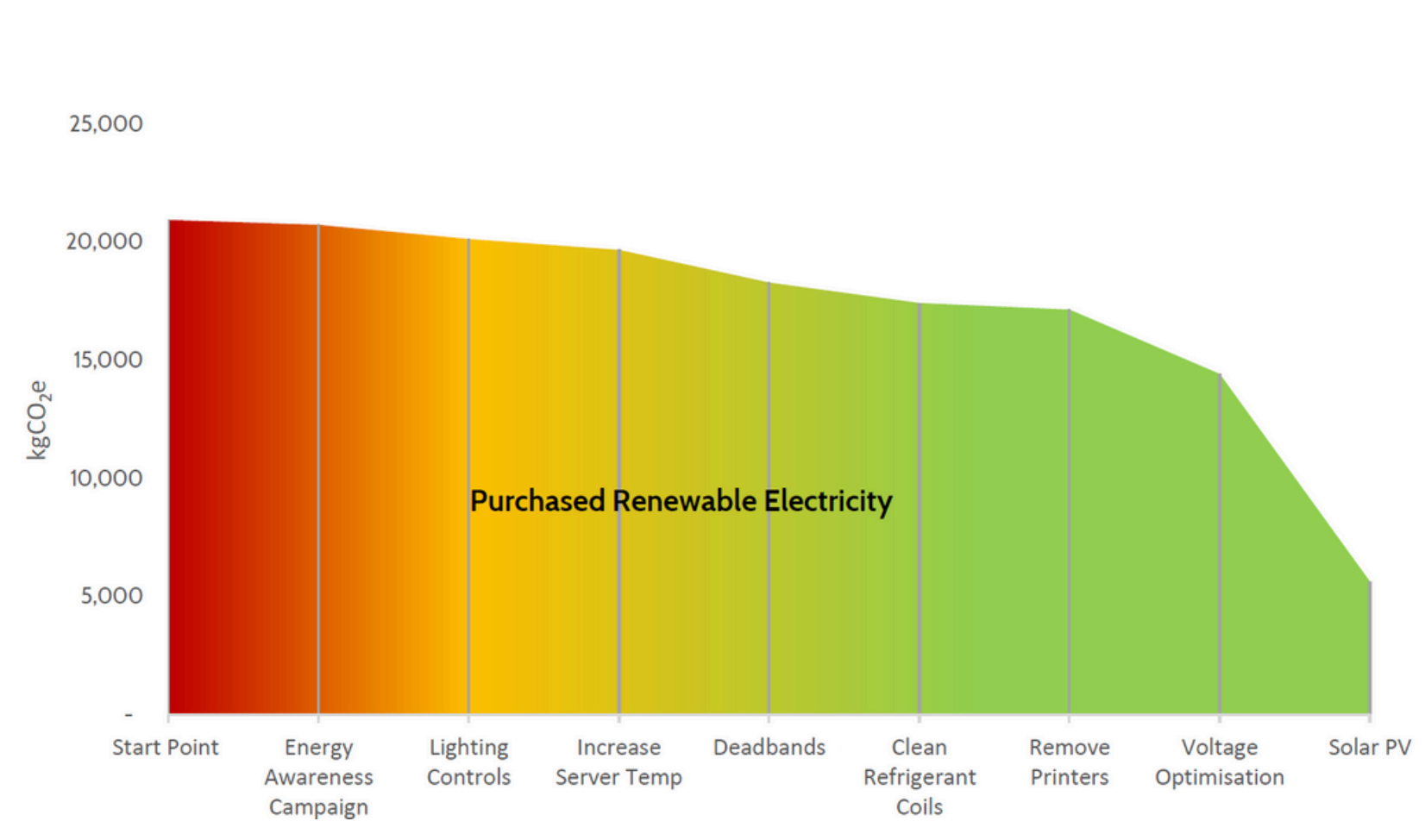


# Decarbonisation Action Plan – Blackpool Net Zero Academy Project

FCMS were approached to take part in a local government funded Decarbonisation Project alongside Blackpool Council via Blackpool Net Zero Academy. In line with our dedication to carbon reduction, we eagerly accepted this opportunity to be a part of the Blackpool Net Zero Academy project. During the process, we received an energy audit visit, accompanied by a full Decarbonisation Action Plan, from which we have fed into our overarching ESOS Phase 3 plan.

Being involved with this project through our local council was a great opportunity, not only to support our local communities environmental mission to build up a more detailed picture of emissions within the locality, but also to give us further ideas for improvement that we will look to implement over the coming years. We will be keen to uptake opportunities reflective of this in the future.

Figure 5: Carbon Reduction Pathway



A summary of the recommendations identified is detailed below. Direct carbon savings are shown inclusive of additional 'knock-on' transmission and distribution and well-to-tank emissions reductions.

Category	Recommendation	Predicted Annual Savings			Install Cost (£)	Payback (Years)
		Energy (kWh)	Cost (£)	Carbon (kgCO <sub>2</sub> e)		
Energy	Energy Awareness Campaign	763	£ 481	210	£ -	-
Lighting	Lighting Controls	2,190	£ 1,380	602	£ 2,000	1.45
Heating	Increase Server Temp	1,682	£ 1,060	462	£ -	-
Heating	Deadbands	2,523	£ 1,589	1,387	£ -	-
Equipment	Clean Refrigerant Coils	3,110	£ 1,960	855	£ -	-
Equipment	Remove Printers	1,037	£ 653	285	£ -	-
VO	Voltage Optimisation	8,447	£ 5,321	2,726	£ 10,000	1.88
Solar	Solar PV	32,000	£ 20,160	8,796	£ 85,000	4.22
TOTAL		51,751	£ 32,603	15,322	£ 97,000	2.98

£32,603 saved a year

71% reduction

51,751 saved a year

68% reduction

15,322 saved a year

42% reduction

7



# An **Insight** into our **Current Emissions**

.....

The data below gives an insight into our Greenhouse Gas emissions, extracted directly from our ESOS and SECR reports.

The majority of FCMS services are co-located within larger Health Care buildings, and therefore we don't have the ability to monitor purchased gas and electricity usage. With this in mind, our SECR and ESOS findings are for the locations where we do have control over this. However, for all emissions that we can control within the shared locations, we are committed to taking action, such as with fleet vehicles, grey fleet, staff awareness, printing, etc.

Summary GHG Emissions Results

Scope 1 Emissions	FY 2024		FY 2025		% Change From BL	
	kWh	tCO <sub>2</sub> e	kWh	tCO <sub>2</sub> e	kWh	tCO <sub>2</sub> e
Natural Gas	54,691	10.00	41,220	7.54	-25%	-25%
Company Vehicle Fleet - Diesel	66,778	15.97	60,703	14.51	-9%	-9%
Company Vehicle Fleet - Petrol	121,520	26.94	124,937	27.51	+3%	+2%
Scope 2 Emissions – Location Based						
Purchased Electricity - Buildings	102,382	21.20	97,872	20.26	-4%	-4%
Purchased Electricity – EV Charging	242	0.13	2,114	1.29	n/a	n/a
Scope 3 Emissions						
Grey Fleet - Diesel	94,260	23.87	118,477	30.00	+26%	+26%
Grey Fleet - Petrol	96,708	22.57	124.962	28.97	+29%	+28%
Total Emissions – Location Based						
Total Emissions	536,581	120.69	570,286	130.08	+6%	+8%
Intensity Ratios						
tCO <sub>2</sub> e per FTE employee	-	0.28	-	0.32	-	+14%
tCO <sub>2</sub> e per £m revenue	-	2.77	-	2.89	-	+4%





# An **Insight** into our **Current Emissions** Continued...

Figure 3: GHG Emissions by Source

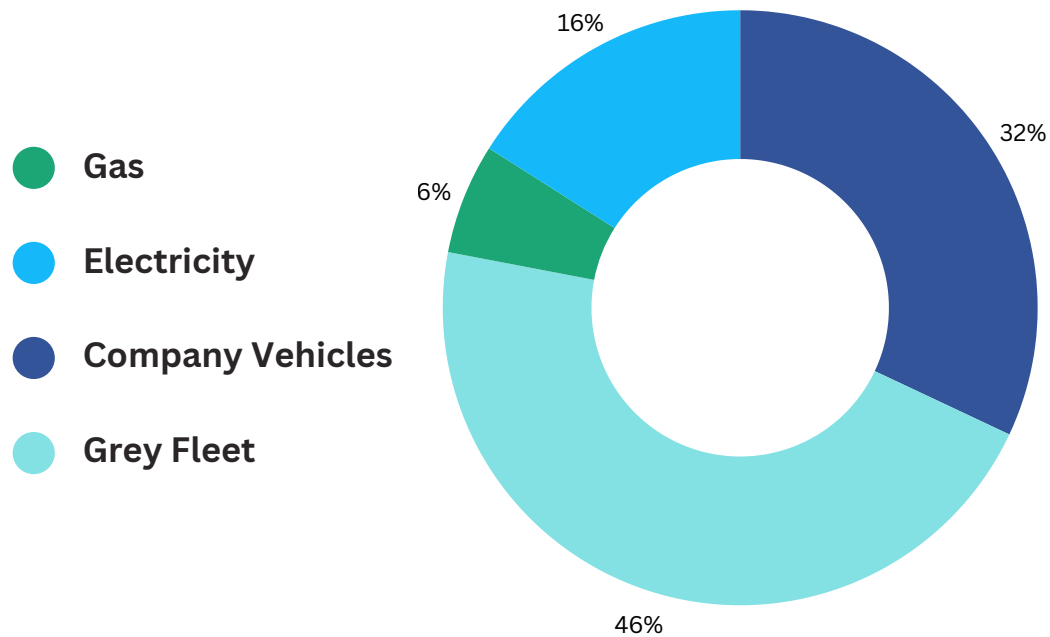


Figure 3: GHG Emissions Sources

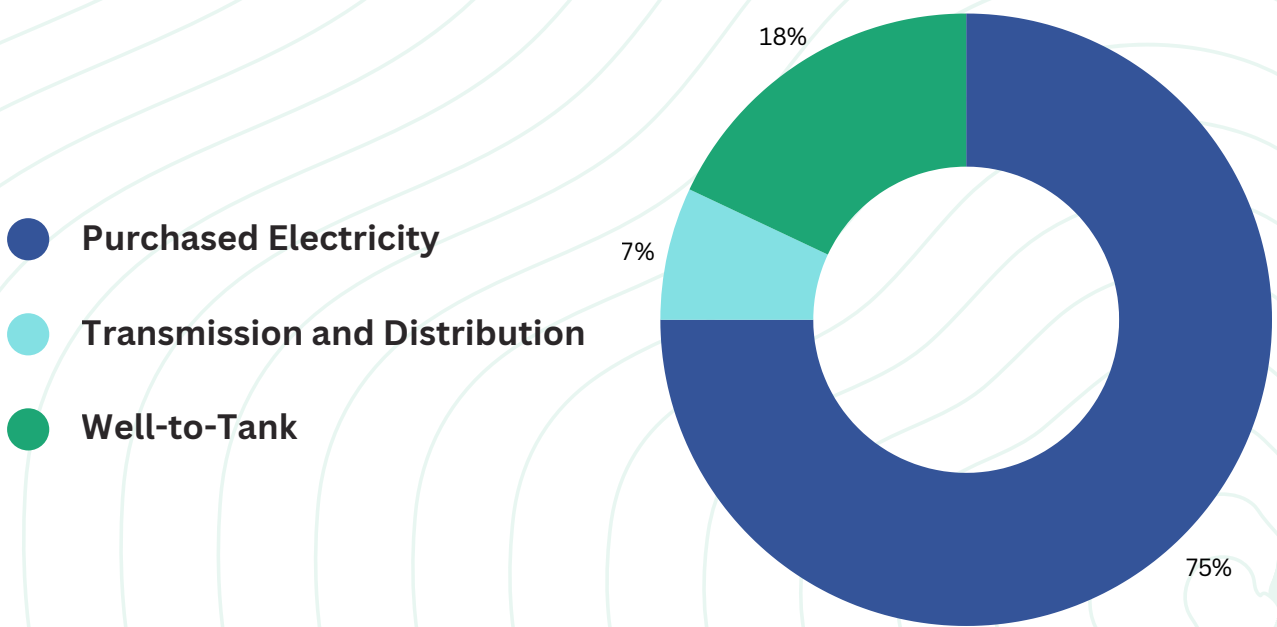
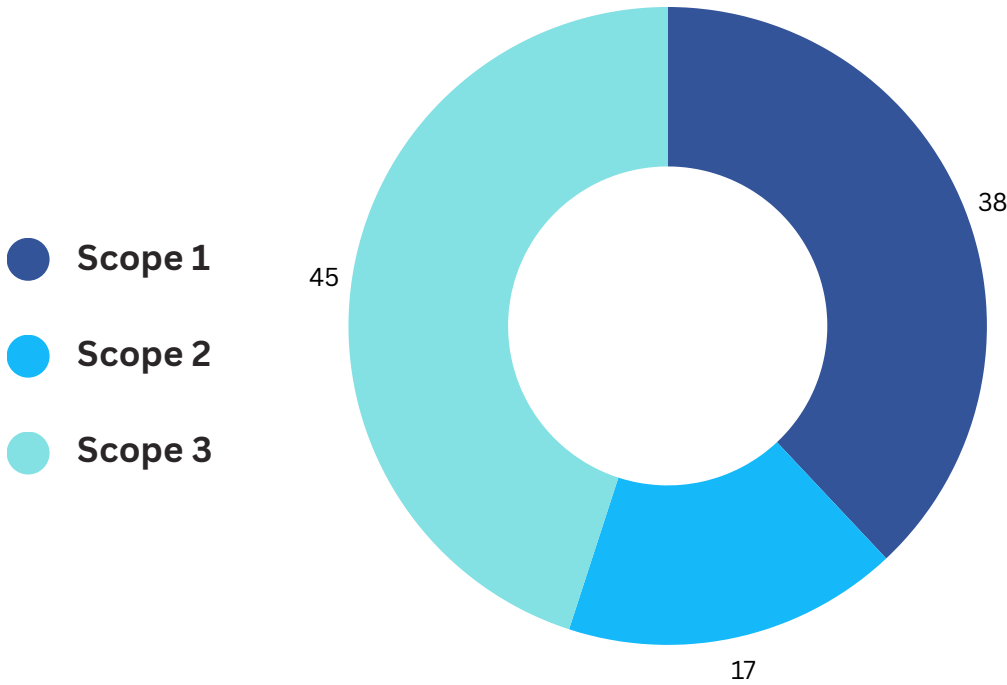


Figure 2: GHG Emissions by Scope





# Our Carbon Reduction areas of focus

On review of the recommendations made within our ESOS and SECR reports, alongside organisational goals, there are various areas we are looking to imminently focus on to reduce our carbon footprint.

## Printing & Paper

Reducing our paper usage is a project that is currently underway – Project Paper! The end goal here is for all of our services to be using 100% recyclable paper.

### How will we do it?

- Reminding all staff to ‘think before you print’
- Double-sided and grey-scale printing to be a standard setting selected.
- Monthly printing statistics monitored and areas for improvement noted.
- Head Office to implement 100% recycled paper by December 2025, to set the expectation for all other sites.
- Reduction of printers within building.
- It is estimated, the above actions could save approximately 300 kgCO2e per annum.

## Business travel – inclusive of grey fleet

Our SECR report showed that 46% of our GHG Emissions are from our Grey Fleet (Scope 3). As an area within our control, we are dedicated to making progress here as one of our top priorities.

### How will we do it?

- Travel Survey for all FCMS staff – scheduled for Oct 2025
- Create a Grey Fleet Policy.
- Review incentives – EV charging at Head Office accessible for staff, car sharing incentives, public transport discounts.
- Review mileage claims and themes/trends and review.

## Facilities – Head Office

Due to the nature of FCMS, Scope 2 emissions can be somewhat difficult to monitor, and therefore we want to make the locations in which we can control these really count.

### How will we do it? (Short term)

- Push button taps to be installed to reduce hot water usage/wastage.
- Expand motion-censored lighting across the building.
- Minimise simultaneous operation of heating and cooling systems.
- Increase Server Room temperature set point.

### How will we do it? (Long term)

- Exploration of Solo Panels – it is estimated this could save approximately 2,726 kgCO2e per annum.
- Exploration of Voltage Optimisation throughout the building – it is estimated this could save approximately 2,726 kgCO2e per annum.

## Continuation of raising organisation awareness:

- Keeping momentum of our Green Champion Committee, through bi-monthly meetings and forums to share ideas.
  - Simple actions such as ‘switch off’ signs nearby to appliances.
  - Green Newsletters to be sent organisationally.
  - Explore training options to expand on knowledge.
- It is estimated, the above actions could save approximately 250 kgCO2e per annum.



